



Excellence in Naval Engineering

SHOLDS

Ships Helicopter Operational Limit Display System

AN EXTENSION OF AGIMET & MORIAH SYSTEMS



Trusted, proven technology to reduce crew workload

Real-time display

display

Reduced manning & workload

manning & workload

NMEA interfaces

interfaces

Multiple SHOL envelopes

SHOL envelopes

SHOLDS provides real-time, automatic plotting capabilities of the relative wind measured by the ship's on-board meteorological system. This removes the need for printer paper SHOL envelopes, minimising the ship crew's workload.

SHOLDS also incorporates 'Fox Corpen' or 'Flying Course'; if the wind parameters are outside the specified limits, the system will calculate and display the ship course and speed required to achieve safe operation.

Automated plotting for reduced workload

FUNCTIONALITY

- Dynamic display of ships relative wind, superimposed on a pre-selected helicopter operating limits diagram
- Indicates a Green (Go) status if the wind is within limits, and a Red (No-Go) if outside limits, to assist the Flight officer assess flight operations' safety
- Other parameters such as sea state, pitch and roll are also considered in the decision to launch or recover a helicopter.

MFCR BASE UNIT

- Based on AGI's MFCR hardware
- The MFCR units employ dedicated software to perform the SHOL application
- Bulkhead or panel mounted versions
- Multiple SHOL envelop storage
- Capability to display multiple log, meteorological and own ships data pages in addition to SHOL data
- Custom data pages available

FLYING COURSE FOX CORPEN MODE

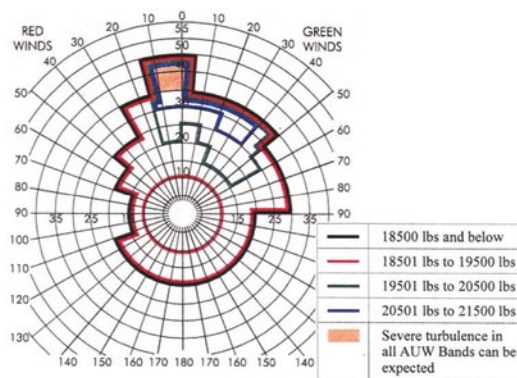
- Enter the MFCR / SHOLDS into FOX CORPEN mode
- Position the cursor for the desired wind (within the envelope)
- The system will give suggestions for a new ships speed and/or course.



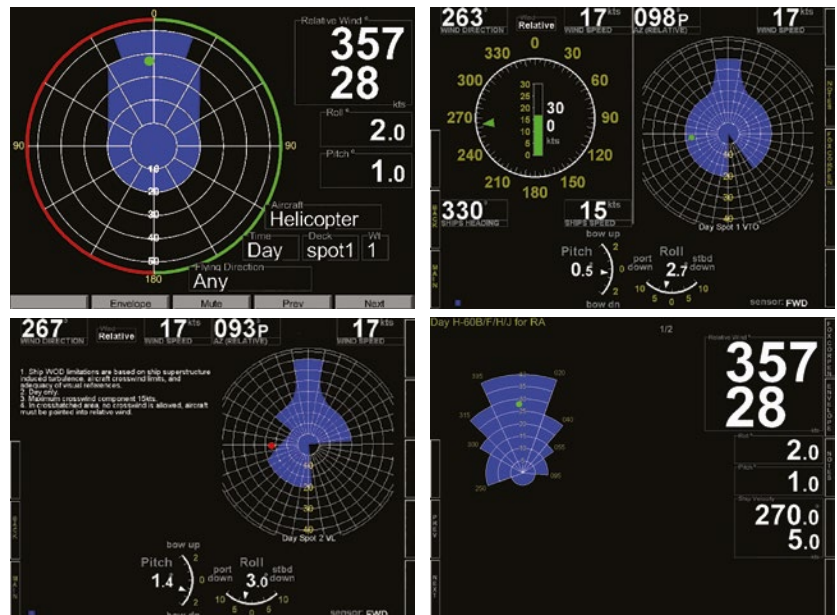
SPECIFICATION

Available sizes	15", 10.4"
Power supply voltage	115/230 VAC (factory set)
Dimming	Dimmable to zero brightness
Interfaces (standard)	Multiple RS422 channels (Bi-directional Comms, Opto-isolated)
Interfaces (optional)	Ethernet

TRADITIONAL MANUALLY PLOTTED PAPER SHOL ENVELOPE



DIGITISED SHOLDS DISPLAYS



For more information or to enquire about our **bespoke design services** please get in touch:

T +44 (0)1202 685 661 (opt 2)

Aeronautical & General Instruments Limited
Fleets Point | Willis Way | Poole | Dorset | BH15 3SS | UK

© Aeronautical & General Instruments Limited is a portfolio company of AGI Holdings LLC



www.agiltd.co.uk