



Excellence in  
Naval Engineering



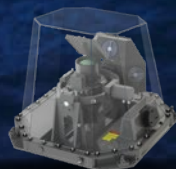
# VISUAL LANDING AIDS

FOR ROTARY WING, FIXED WING & UAV OPERATION

## SAFETY AT SEA



OPERATOR CONTROLS



GLIDE SLOPE INDICATOR



LED LIGHTING



Aeronautical & General  
Instruments Limited

153  
ACTIVE SYSTEMS  
OPERATING  
WORLDWIDE

# Day and night safer flight

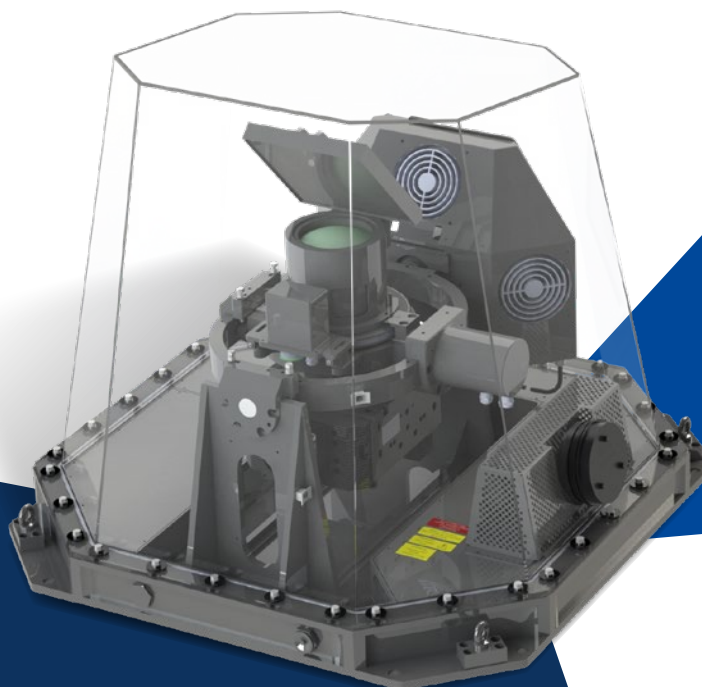
AGI Visual Landing Aids - fully integrated digital system for manned and unmanned flight deck, operational with and without Night Vision Devices for the world's most advanced navies.

The ability to safely operate and recover aircraft at sea in all weather conditions, during both day and night time operations, is essential to today's modern navy. A fundamental element of this requirement is its guidance along the correct approach path to the vessel and the transfer of the aircraft safely on to the ship's flight deck.

AGI's Visual Landing Aids may be used for any class of ship from a small frigate to an aircraft carrier and may comprise any combination of the equipment shown here.

## GLOBAL SYSTEM FEATURES

- Operational with NVD's
- Complete off-the-shelf design
- Low power consumption
- LED based system
- Ethernet based
- Universal power supply
- Designed to support vessel refit



## ASGSI

ADVANCED STABILISED  
GLIDE SLOPE INDICATOR

40°  
**WIDE BEAM**

**ANTI-ICE**  
HEATER BUILT IN

180°  
**ADJUSTABLE BEAM**  
IN AZIMUTH



## ROTARY WING OPERATIONS



- AGI's Visual Landing Aids reduce pilot workload, increase flight safety and the operational capability of the navy.
- The system significantly improves pilot spatial awareness with the capability of supporting daytime use and simultaneous aided and unaided use at night.
- Chosen by the world's most capable navies.

## FIXED WING OPERATIONS



- An integrated system with the capability to support the world's most advanced jet aircraft including the JSF F-35B STOVL.
- Products combine to deliver advanced visual cues that fully support the landing and movement on deck of jet aircraft.
- Designed to support the future capability of aircraft globally.
- Integrated approach path cameras.

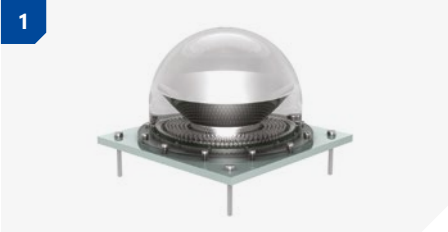
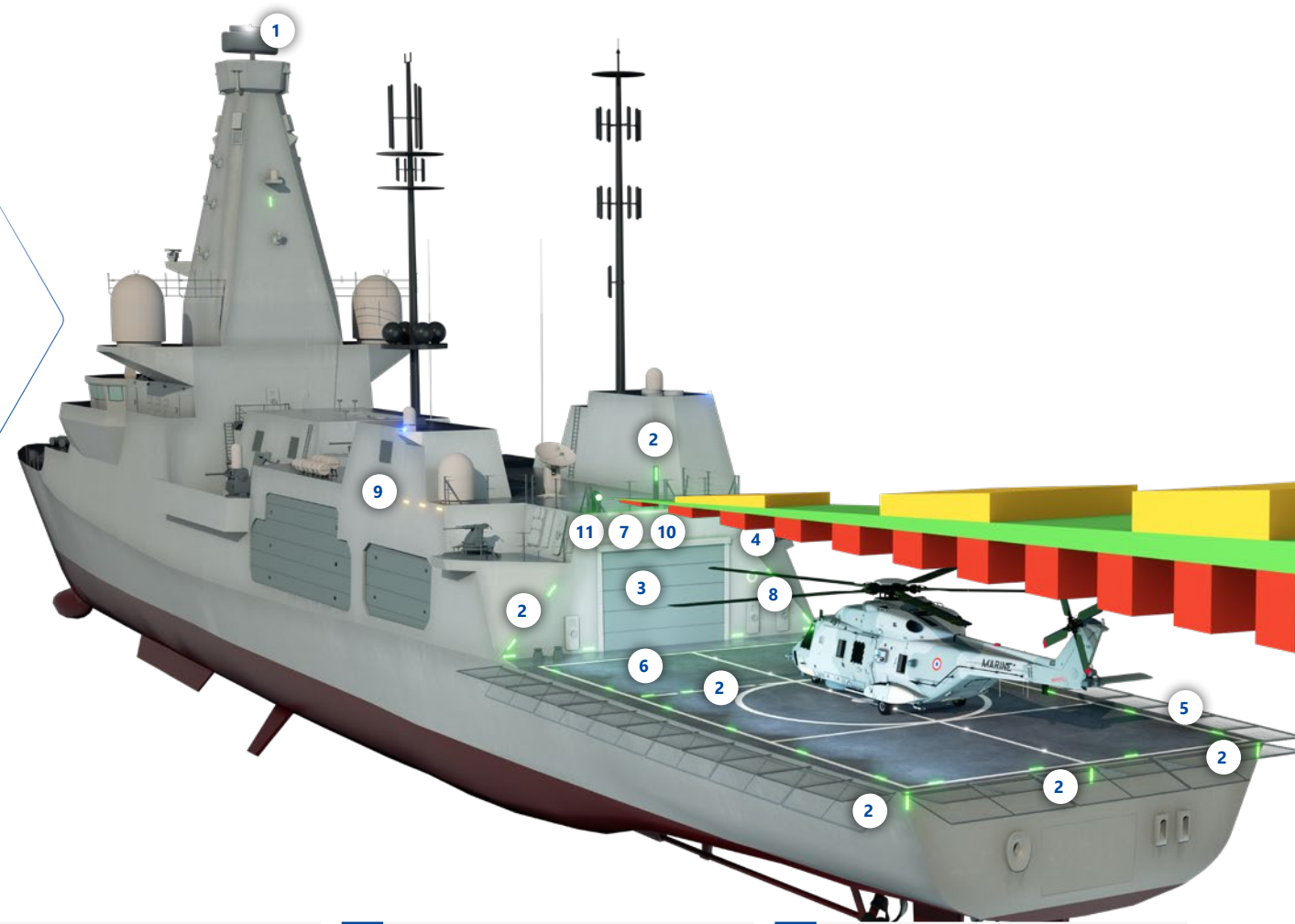
## UAV OPERATIONS FROM NAVAL FLIGHT DECKS



- AGI's system can be DeckFinder™ ready.
- Designed to accommodate the DeckFinder™ system ground segments, which will support the automated landing of any UAV onto the moving platform of a naval ship.
- Delivers the capability of supporting manned and unmanned flight evolutions from the same flight deck.

17

USED BY NAVIES  
WORLDWIDE



HOMING BEACON/MASTHEAD LIGHT

- Multifunction (Identification, Anti-Submarine Warfare, Masthead)
- Omnidirectional light source
- Fully encapsulated LED array



LOW PROFILE  
DECK LIGHT

- Marine grade polycarbonate
- Fully encapsulated
- Waterblock supply cable

Multipurpose  
Edge, Eyeline,  
Lineup,  
Superstructure  
& Dropline  
Light



DIGITAL CONTROL SYSTEM

- Digitally assigned soft key and touchscreen control
- Intuitive software
- Adjustable brightness control
- NVG Filtered screen
- Fault monitoring system
- Day/night and standby modes
- Bulkhead or Panel Mount



DECK FLOOD/ WASH LIGHTS

- Modular construction
- LED Flood/Wash Light engines
- Adjustable light modules
- Waterblock cable and connection



MULTIFUNCTION PILOT INFORMATION DISPLAY

- Superstructure mounted
- Red Cross, Yellow Triangle, Green Circle and Wave-Off indications
- Fully addressable



OMNIDIRECTIONAL LED

- Marine grade polycarbonate dome
- Composite base

Multipurpose  
HIFR,  
Obstruction,  
Obstacle  
Light



REMOTE WAVE  
OFF SWITCH

- External and internal panel mount options
- Protective shroud
- Twist release reset design



PILOT INFORMATION  
LIGHT

- Red Cross, Yellow Triangle and Green Circle Indications
- Fully encapsulated



STOP-GO LIGHT

- Fully encapsulated
- Shrouded & Unshrouded Options



COMBINATION  
DECK LIGHT

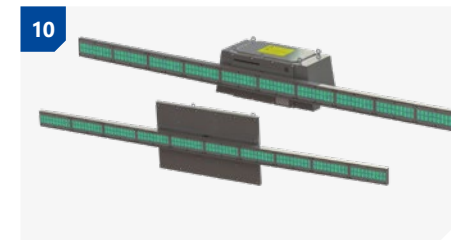
- Integral Stop-Go LED version option
- DeckFinder™ ready
- Modular construction
- Waterblock cable and connection
- Adjustable light modules

Combined  
Deck Wash,  
Flood,  
Maintenance  
and optional  
Stop-Go  
lighting



DECK FLOOD/WASH/  
STOP-GO LIGHT

- Modular construction
- LED Light engines
- Adjustable light modules
- Waterblock cable and connection



STABILISED HORIZON REFERENCE  
SYSTEM (SHRS)

- Gyro-stabilised horizon indication
- Various mounting options
- Configurable gyro format



SHRS WITH PILOT VISUAL CUES

- Aircraft positioning indication
- Fully encapsulated LEDs
- Modular design
- Used with ASIST



OVERHEAD FLOODLIGHTS

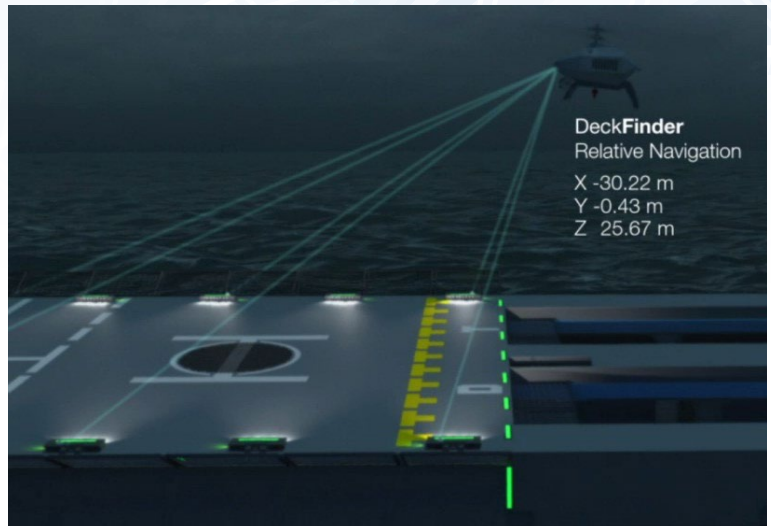
- Deck-Superstructure and aircraft illumination
- Modular construction
- LED Flood/Wash Light engines
- Adjustable light modules
- Waterblock cable and connection



# Supporting Future UAV Operations

AGI's Combination Deck Lights can incorporate a localised GPS system.

This equipment, when working in conjunction with the DeckFinder™ airborne segment, is capable of positioning and auto-landing the UAV on the flight deck.



## VISUAL LANDING AIDS

### ADVANCED VISUAL CUES

Reduce pilot workload and make flight safer

### INCREASED OPERATIONAL ENVELOPE

Improved spatial awareness safely extends operations

### NIGHT VISION DEVICES (NVD)

Consistent visual images, aided and unaided

### REDUCED THROUGH-LIFE COST

LED systems increase availability and reduce cost of ownership

### UAV FLIGHT OPERATIONS

One system to support manned and unmanned flight operations

**PART OF AGI HOLDINGS GROUP**  
International Engineering Excellence



Aeronautical & General Instruments Limited  
Fleets Point | Willis Way | Poole | Dorset | BH15 3SS | UK

+44 (0) 1202 685 661

[sales@agiltd.co.uk](mailto:sales@agiltd.co.uk) | [agiltd.co.uk](http://agiltd.co.uk)

